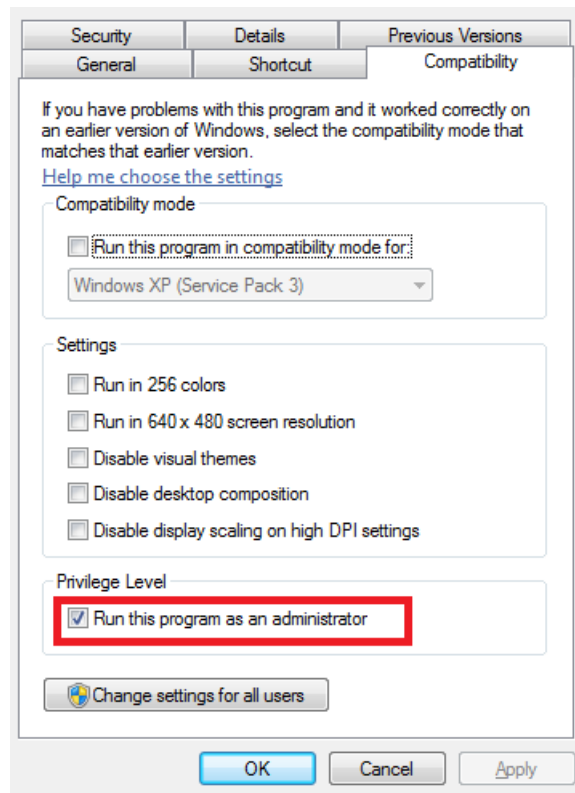
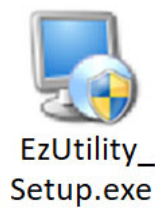


1. Right-click on [EzUtility_Setup.exe](#) and tick 'Run this program as an administrator' in the pop-up menu. Complete the installation by double-clicking on the [EzUtility_Setup.exe](#).



2. After successful installation, please also right-click on the shortcut icon of [Ez Utility](#) on the desktop and tick 'Run this program as an administrator' in the pop-up menu.



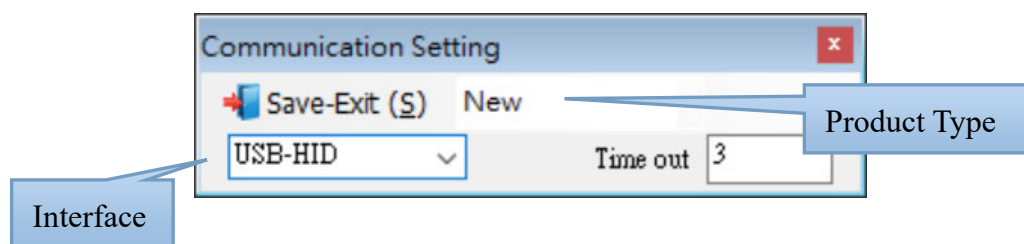
3. Connect the scanner and the host with USB cable.
4. Scan [\[.C008\\$\]USB-HID](#) below to switch to USB-HID interface.

. C008\$



USB-HID

- Run **Ez Utility**, select Product Type as appropriate (see below Table 1 for details), select “**USB-HID**” as Interface, keep Time out as is, and click [Save-Exit (**S**)] to continue.



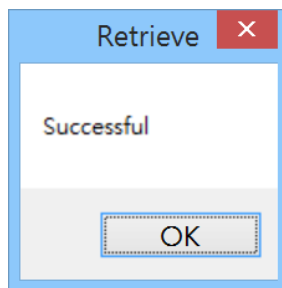
< Table 1: Product Type & Corresponding Models >

Product Type	Corresponding Model(s)
New Models	
New	MT15,MT6225,MT8300,MT830(M),MT8600V, MT6250,MT850,MT8250P(E),MT8210P,MT8225(HF),MT851, MT581,MT584(M),MT582(M),MT840,MT500,MT820(M),MT8251B, MR13(W) MT412/MT5300/MT52501 (FW: HM3-b-x.xx.R) MT10 (FW: HM3-d-x.xx.R) MT1095 (FW: HM3-c-x.xx.R) MT8010 (FW: HM3-e-x.xx.H1) MT30/MT40(W) (FW: SM3-k-2.xx, HM3-k-x.xx.R) MT780 (FW:HM3-e-x.xx, HM3-e-x.xx.R) MT1227L (FW: HM3-h-x.xx.BTA) MT100A (FW: HM3-c-x.xx.BTA) MT110(M) (FW: HM3-c-x.xx.BTA.M1) MT110L(M) (FW: HM3-c-x.xx.BTA.LS)
Legacy/EOL Models	
General	MT6600H,MT3000,MT2000 MT412/MT5300/MT52501 (FW: FM3-b-x.xx) MT1095 (FW: SM3-c-x.xx) MT8010 (FW: SM3-e-x.xx.H1) MT7950TA,MT3000L,MT2000L
Engine	MT700,MT710D,MT742(L),MT752(L),MT712LR-III, MT10 (FW: SM3-d-x.xx) MT30 (FW: SM3-j-1.xx) MT40(W)(FW: SM3-k-1.xx) MT780 (FW:SM3-e-x.xx)

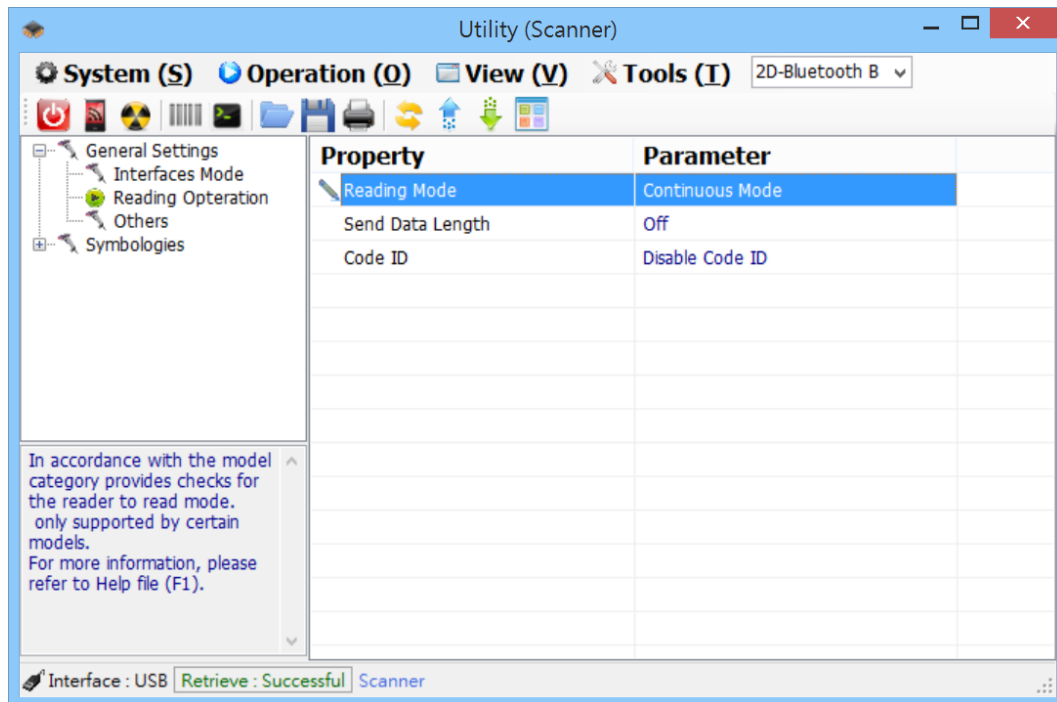
1D-Fixed	MT6220
1D-Bluetooth	MT1097,MT1197M(W),MT1297,MT7937B,MT300L,MT3000LB,MT500L MT100A (FW: SM3-c-x.xx.BTA) MT110(M) (FW: SM3-f-x.xx.BTA.MEM) MT110L(M) (FW: SM3-f-x.xx.BTA.G2.MEM)
2D-Fixed	MT6222
2D-Bluetooth	MT1227L (FW: SM3-h-x.xx.BTA)
2D-Handheld	MT8200H

*Note: For MT15, MT6250R or any product equipped with RS232 cable, skip Step4 and Step10.
Select RS232/USB-VCP at Step5.

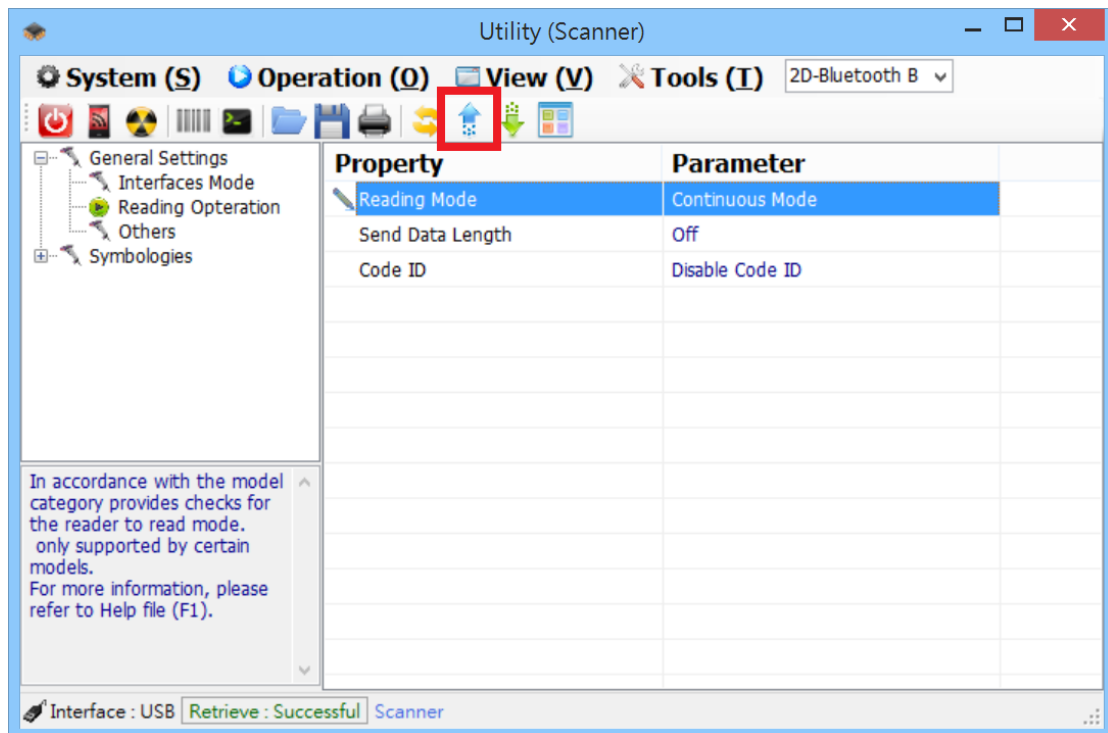
6. The program will automatically retrieve configuration from the scanner. If the retrieval is successful, you will see below dialog.



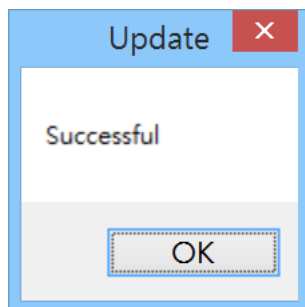
7. Double click on parameters and select the desired option from the drop-down menu to make changes. Below is an example.



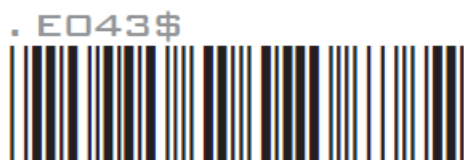
8. Click the Upward Arrow on the Toolbar to upload configuration to the scanner.



9. Below dialog indicates that your edited configuration is successfully uploaded to the scanner. Now you may disconnect cable from the scanner.



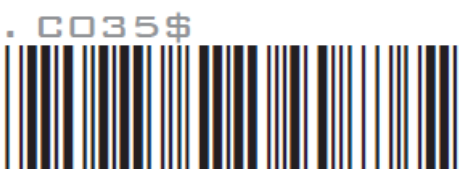
10. Scan one of the configuration barcodes below to reset the scanner back to the desired interface:



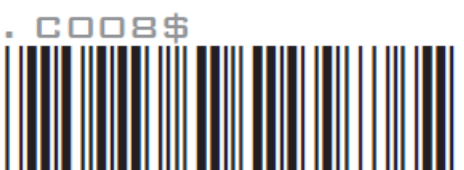
BT HID



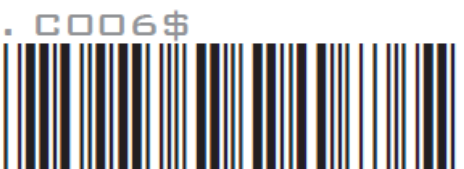
BT SPP



Memory Mode



USB HID



USB VCP